



## LED UFO High Bay Fixture



Industrial application:  
Warehouse, Factory etc.

### GENERAL DESCRIPTION

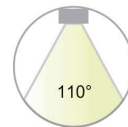
UFO High Bay LED luminaries are slim, sleek and lightweight for easy install, and suitable for up to 30 foot mounting heights. The UFO delivers efficient and uniform light. The luminaire offers a 50K hour life rating and is suitable for elevated ambient temperatures. Perfect for warehouses, gymnasiums, production assembly areas, and any high ceiling applications.

### FEATURES

- Built-in cooling fins provide maximum heat dissipation for higher ambient temperatures
- Die cast hook mount standard for ease of installation
- 1/2" threaded hub for pendant mount applications
- Impact resistant glass lens
- Includes 6-foot power & dimming cord with leads
- Wet location rated IP65

### APPLICATIONS

Suitable for wet location  
Warehouse and industrial lighting



### SPECIFICATIONS

**Volts:** 120-277VAC

**Power Factor:** >0.9

**THD:** <20%

**Average Rated Life:** 50,000 Beam

**Angle:** 110°

**CRI:** >80

**CCT:** 5000K

**Color:** Black

**Ambient temp:** -40°F to 140°F

### ORDERING GUIDE

Model No: HYA-UFOxx-(XX)W-110-H-HV-(XX)K					
Company Code	Product	Watt	Beam Angle	Voltage	C.C.T.
HYA	UFO12	100W	110: 110 Degree Beam Angle	H: 110-277V H-HV: 240-488V	40K: 4000K 50K: 5000K
	UFO15	150W			
	UFO24	200W			

# LED UFO High Bay Fixture

## SPECIFICATIONS

Model No.	Power	Lumens	Lumen Efficiency	CCT	Dimmable	Mounting Height	Voltage	Qty per Case
HYA-UFO12-100W-110-H	100w	13,000	130LM/W	4000K/5000K	0-10v	15' to 20'	AC100-277V	1
HYA-UFO15-150W-110-H	150w	19,500	130LM/W	4000K/5000K	0-10v	20' to 25'	AC100-277V	1
HYA-UFO24-200W-110-H	200w	26,000	130LM/W	4000K/5000K	0-10v	25' to 30'	AC100-277V	1
HYA-UFO15-150W-110-H-HV	150w	19,500	130LM/W	4000K/5000K	0-10v	20' to 25'	AC220-480V	1
HYA-UFO24-240W-110-H-HV	240w	31,200	130LM/W	4000K/5000K	0-10v	25' to 30'	AC220-480V	1

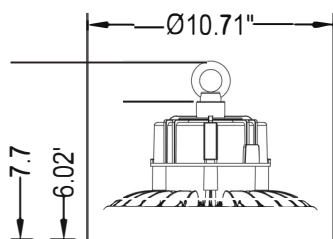
### Dimensions

100W/150W: 11.9" Dia. x 2.68" Depth  
 200W/240W: 14.9" Dia. x 2.99" Depth

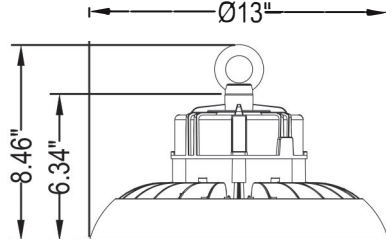
### Weight

100W and 150W: 9.2 lbs  
 200W: 14.3 lbs

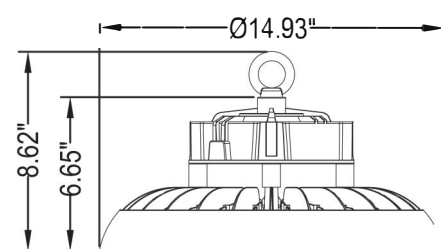
### 1. Ring type:



100W

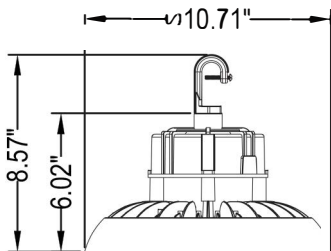


150W

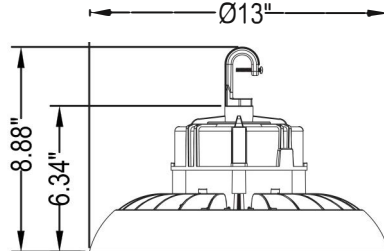


200W/240W

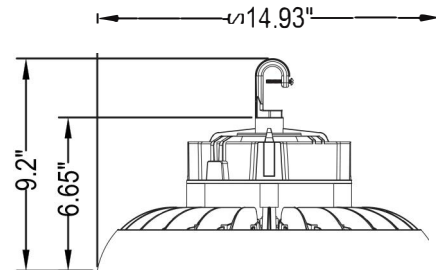
### 2. Hook type:



100W



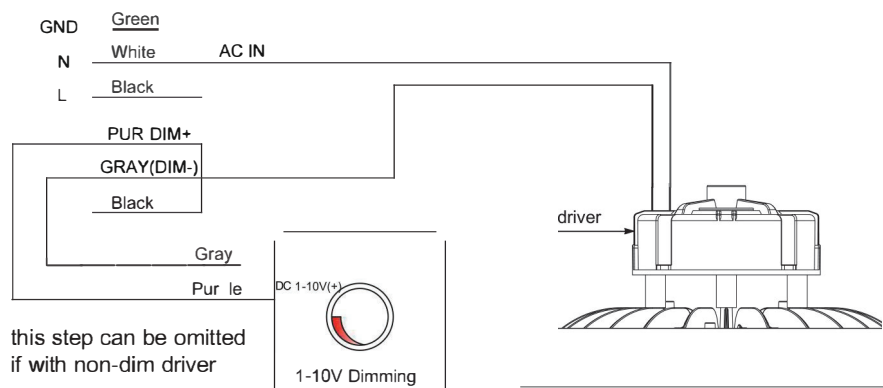
150W



200W/240W

## DIMMER CONNECTION

- Compatible with 0-10V dimming.
- Connect wires as below, purple wire is D+, gray wire is D-, cap black wire.



UFO HIGH BAY